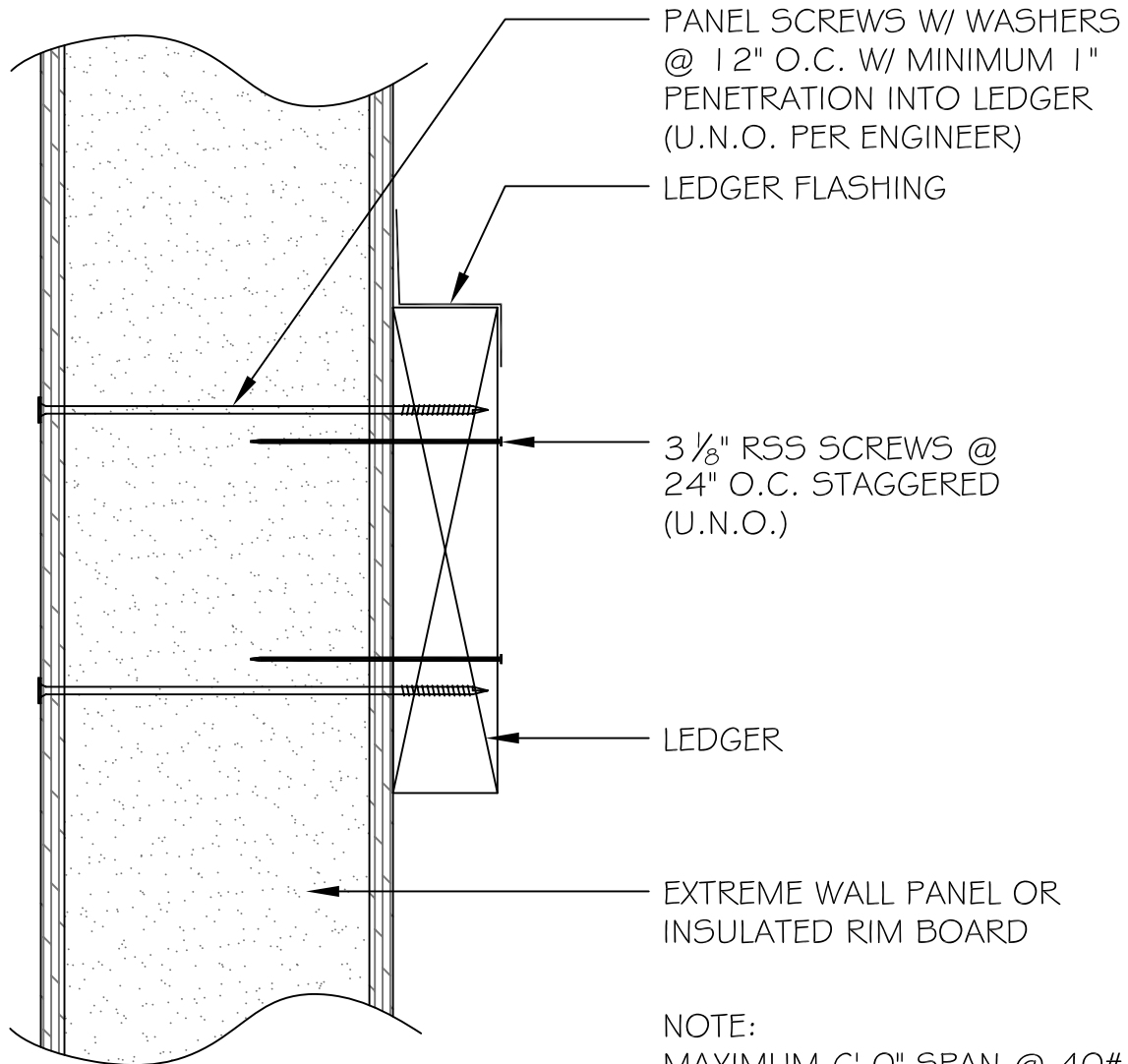


INSTALLATION SEQUENCE:

TO ATTACH LEDGER TO WALL PANELS USE SUBFLOOR ADHESIVE AND 2 ROWS OF 3/8" RSS SCREWS SPACED @ 24" O.C. STAGGERED (U.N.O.) -- THEN USE 8" PANEL SCREWS W/ WASHERS FROM INTERIOR OF WALL AT 12" O.C. STAGGERED (U.N.O.)



NOTE:  
MAXIMUM 6'-0" SPAN @ 40#  
LIVE LOAD.

SECTION  
NOT TO SCALE

DETAIL TITLE : DECK LEDGER ATTACHMENT

DETAIL NO. : EP-120

PAGE NO. : 1 - 20

UPDATED : 2/5/2009

**Extreme Panel**  
Technologies, Inc.  
QUALITY EFFICIENT BUILDING SYSTEMS